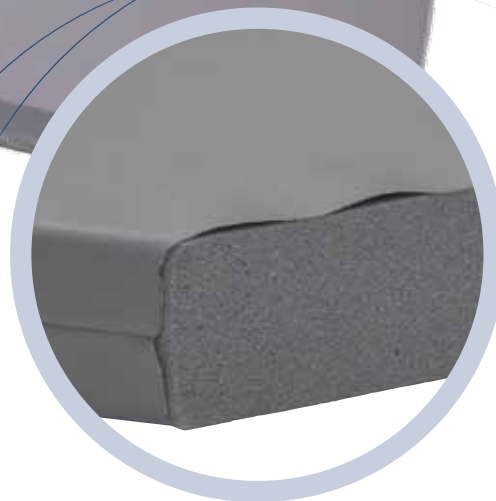


Neoprene *foam core mattress*



Standard Features

- Flame retardant Neoprene foam core
- Covered with Correct-Tick® 10-1 antibacterial ticking
- Non-allergenic, bacteria resistant - antimicrobial and antifungal
- Internal sealed seams
- Fluid proof and stain resistant
- Passes CFR part 1633 of the Code of Federal Regulations

Model #	Price	Size
2181	\$150	27"W x 76"L x 3"H
2183	\$158	30"W x 74"L x 3"H

Note: Custom sizes available upon request.



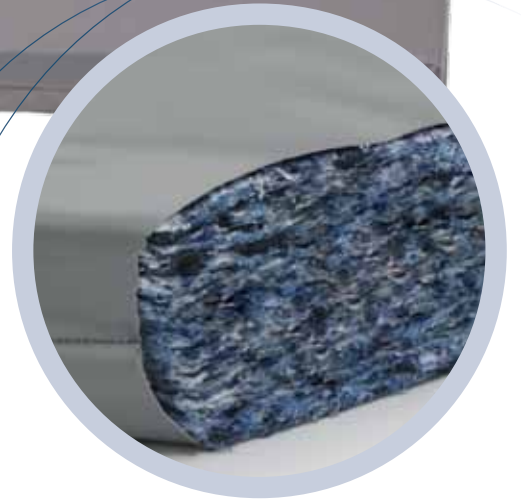
WASHINGTON STATE
CORRECTIONAL INDUSTRIES

FAX: 1.888.535.0627 | www.washingtonci.com

For more information, call your Account Executive or Customer Service at 1.800.628.4738.

Bonded Logic

recycled content core mattress



Standard Features

- Flame retardant recycled content core
- Covered in Correct-Tick® 10-1 antibacterial ticking
- Non-allergenic, bacteria resistant - antimicrobial and antifungal
- Internal sealed seams
- Fluid proof and stain resistant
- Passes CFR part 1633 of the Code of Federal Regulations

Model #	Price	Size
2131	\$53	27"W x 76"L x 3.5"H
2132	\$53	30"W x 74"L x 3.5"H
2133	\$53	30"W x 72"L x 3.5"H
2134	\$68	36"W x 76"L x 3.5"H
2137	\$89	35"W x 80"L x 6"H
2138	\$53	30"W x 76"L x 3.5"H
2139	\$89	30"W x 76"L x 6"H

Note: Custom sizes available upon request.

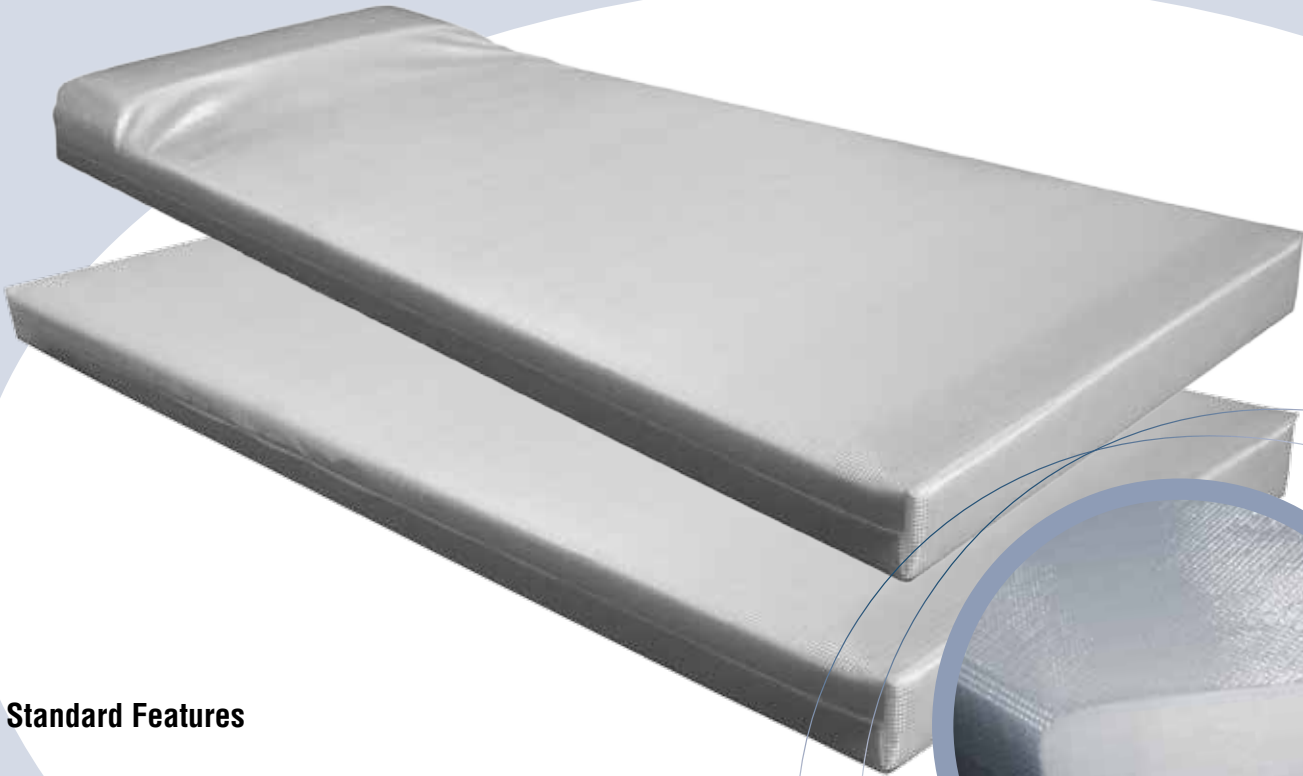


WASHINGTON STATE
CORRECTIONAL INDUSTRIES

FAX: 1.888.535.0627 | www.washingtonci.com

For more information, call your Account Executive or Customer Service at 1.800.628.4738.

Clear View *densified fiber core mattress*



Standard Features

- Flame retardant densified fiber core with or without built-in pillow
- Covered with clear view non-slip ticking
- Non-allergenic, bacteria resistant - antifungal
- Internal sealed seams
- Fluid proof and stain resistant
- Passes CFR part 1633 of the Code of Federal Regulations

Model #	Type	Price	Size
2140	with pillow	\$80	30"W x 74"L x 3"H
2140W/O	without pillow	\$75	30"W x 74"L x 3"H

Note: Custom sizes available upon request.



WASHINGTON STATE
CORRECTIONAL INDUSTRIES

FAX: 1.888.535.0627 | www.washingtonci.com

For more information, call your Account Executive or Customer Service at 1.800.628.4738.