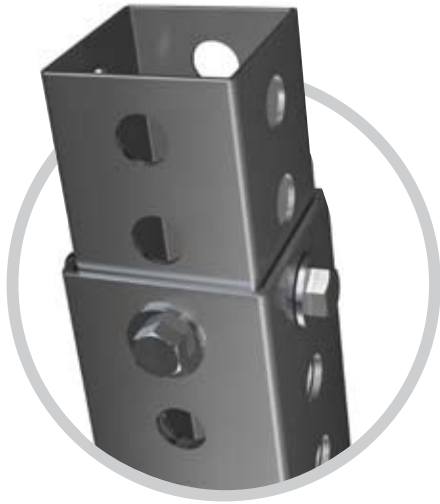


TELESPAR SIGN POSTS & HARDWARE

Correctional Industries supplies Telespar sign posts, fittings and accessories in a wide variety of shapes and sizes, including perforated square tubing. Telespar posts are durable, easy to install, and component repairable to save time and money. Can't find what your looking for? Please call 1.509.526.6498 for more options.



Square Perforated Tubing (14-Gauge)	Item #	Price
2" Sq x 10'	20D12P-10-PG-SL	\$23.18
2" Sq x 12'	20D12P-12-PG-SL	\$27.56

Square Perforated Tubing (12-Gauge)	Item #	Price
2" Sq x 9'	20F12P-09-PG-SL	\$28.33
2" Sq x 10'	20F12P-10-PG-SL	\$28.33
2" Sq x 11'	20F12P-11-PG-SL	\$34.00
2" Sq x 12'	20F12P-12-PG-SL	\$34.00
2" Sq x 13'	20F12P-13-PG-SL	\$39.19
2" Sq x 14'	20F12P-14-PG-SL	\$39.19
2-1/4" Sq x 12'	22F12P-12-PG-SL	\$36.60
2-1/4" Sq x 14'	22F12P-14-PG-SL	\$42.47
2-1/2" Sq x 12'	24F12P-12-PG-SL	\$40.54
2-1/2" Sq x 14'	24F12P-14-PG-SL	\$47.08
2-1/2" Sq x 20'	24F12-20-PG-SL	\$66.16
2-1/2" Sq x 24'	24F12-24-PG-SL	\$79.48

Square Perforated Sleeves (12-Gauge)	Item #	Price
2-1/4" Sq x 18"	22F12A-PG-SL	\$5.12
2-1/2" Sq x 18"	24F12A-PG-SL	\$5.54

Square Perforated Anchors (12-Gauge)	Item #	Price
2-1/4" Sq x 30" For 2" Post	22F12A-2.5-PG-SL	\$8.10
2-1/4" Sq x 36" For 2" Post	22F12A-03-PG-SL	\$9.58
2-1/2" Sq x 30" For 2-1/4" Post	24F12A-2.5-PG-SL	\$8.92
2-1/2" Sq x 36" For 2-1/4" Post	24F12A-03-PG-SL	\$10.57

Square Heavy Duty Anchors (7-Gauge)	Item #	Price
2-1/2" Sq x 30" For 2" Post	25K12A-2.5-HG-SL	\$23.58
2-1/2" Sq x 36" For 2" Post	25K12A-03-HG-SL	\$27.84
3" Sq x 36" For 2-1/2" Post	30K12A-03-HG-SL	\$33.38
3" Sq x 48" For 2-1/2" Post	30K12A-04-HG-SL	\$43.78



WASHINGTON STATE
CORRECTIONAL INDUSTRIES

Nuts & Bolts	Item #	Price
3/8"-16 x 3" Hex Head Bolt Zinc (GR2)	3748CHHC2Z-SL	\$0.30
3/8"-16 Steel Tufnut For GR2/GR5 Bolts	VCN225-37-SL	\$1.09
3/8"-16 Flanged Nut - Case Hardened	G8FN38-Z-SL	\$0.19
3/8"-3-1/2" Flanged Shoulder Bolt (GR8)	G8FSB38-35-Z-SL	\$1.26
5/16" Corner Bolt For Up To 2.5" Post	VCB240-2.5-SL	\$0.68
5/16" Flanged Nut for Use w/Corner Bolts	VCN168-2-SL	\$0.14
5/16" Steel Tufnut For GR2/GR5 Bolts	VCN225-31-SL	\$0.82

Rivets	Item #	Price
3/8" Aluminum Rivets w/Nylon Washer	VCR221-SL	\$0.78
3/8" Steel Rivets w/Washer	VCR231-SL	\$0.71

Miscellaneous Hardware	Item #	Price
8" Slip Base Assembly	SB8-250TA-G-DOT	\$150.13
8" Slip Base Tubular Top for 2-1/2" Post & 3" Square Anchor	SB8-250TA-G	\$59.41
8" Triangular Slip Base Bottom Half Fits 3" x 7" GA HD Anchor	SB8-250300B-G	\$60.79
10" Slip Base Assembly	SB10-300A-G-DOT	\$170.17
10" Triangular Slip Base Top Half For 2-1/2" Post	SB10-300A-G-SL	\$72.39
10" Triangular Slip Base Bottom Half For 3" Square Anchor	SB10-250300-G-SL	\$75.23
12" Sign Cap for 2" Square Post Flat Blade For Top of Post	812F2SQ-SL	\$22.32
45° Offset Fitting Bracket	TL-019-Z-SL	\$3.34
90° Degree Fitting Bracket	TL-020-Z-SL	\$2.04
812 90° Crosspiece w/VP Set Screws For 12" Blade	812-90W/VP-SL	\$22.32
Universal Redi Torque Hardware Kit	RTSB-MPHDW	\$23.09