

# Washington State Light Industrial Park



TUMWATER, WASHINGTON

Correctional Industries Headquarters  
Department of Natural Resources





In the waiting area, the agencies wanted to provide a comfortable, inviting atmosphere with a modern appeal to it. To accomplish this, the agencies selected sofas and chairs from CI's Minuet line along with custom drum-style coffee tables.

## CI: Meeting the Highest Demands for Flexibility and Adaptability

Moving into new facilities and sharing space with Washington's Department of Natural Resources (DNR) turned out to be more than just a move of convenience for Washington State Correctional Industries (CI). Instead, the occasion presented numerous opportunities to test its creative mettle and create a better experience for customers.

In 2006, CI moved to new office and warehouse facilities at the Washington State Light Industrial Park. CI's new offices shared building space with DNR and the two agencies also share grounds around the office building on the 39-acre complex.

Since the office building was a new construction with common areas to be shared by both agencies, it only made sense that CI, working in conjunction with DNR, would plan and supply the furniture for the building. In total, the project would include office systems for more than 80 staff members and required furniture selections that could adapt to a variety of needs. CI took the occasion as an opportunity to experience its services and products from the customer's perspective and fine-tune them to provide a better experience.

Challenges of furnishing its own office building included developing two complete cubicle systems and furnishing common areas of the building to address the different needs of both agencies. These challenges required furniture selections that could adapt to a variety of needs and required project planners to be inventive and flexible.



Correctional Industries' planning team helped DNR officials select System XXI cubicle panels and a variety of stand-alone desks that allowed for flexibility independent of the panel system.

## Meeting a Variety of Needs



Navigator Chairs  
(Shown Nested)

To increase efficiency, the new office building was designed so that the two agencies could share some areas that aren't in continual use. Shared areas of the building include the waiting area at the building's main entrance, a kitchen and dining area, and a conference room.

"This joint project turned out better than I could have possibly imagined. Our partnership with DNR is a win-win situation."

- Lindsey Konrad, CI



Both agencies chose folding tables and chairs for the conference room so it can be configured for various needs. The room can seat up to 120 people for presentations or facilitate board meetings with chairs arranged around a central conference table. Classroom-style seating is also possible for training sessions and similar functions.



In the kitchen area, the agencies opted for 4-legged tables and CI's Navigator chairs to allow a variety of arrangements. The tables are easy to move and arrange into different configurations, from cafeteria-style seating for everyday lunchroom use to buffet lines for pot-luck events. Navigator chairs are easy to stack out of the way when necessary, and they gang together well for maximizing seating capacity.



For its own offices, Correctional Industries' planning team primarily utilized System XXI cubicle panels, but also included PowerWorks panel systems in some areas. Non-cubicle office spaces utilized stand-alone pieces from CI's Genesis and Volition desk system lines.

## Helping Customers Make Better Decisions



When planning its use of the building and selecting furniture options, Correctional Industries focused on one goal in particular: Make it easier for customers to determine which product lines suited them best.

To that end, CI dedicated a significant portion of its office space to function as a show room. The showroom displays a variety of CI products arranged as they would appear in an office environment, including a fully-functional computer work station. This allows customers to “test drive” furnishings and get a feel for how they work in an office environment rather than just look at pictures in a catalog. Product lines in the showroom are rotated from time to time, to highlight new products and popular trends in office furnishings.

To further enhance the customer experience, Correctional Industries included a variety of panel and desk systems in employee offices. Customers may tour CI’s offices to view its product lines in use, such as this Genesis desk system. It can be difficult to imagine how furniture in a catalog will look and function in a working environment, but CI has solved that problem by turning it’s office space into a functional showroom.





## CI: Solving Problems and Meeting Challenges



Metal Files  
and Storage

Durable metal storage cabinets feature plenty of shelf space, full extension drawer glides and folder bars to accommodate letter or legal files.

Fabrication of the various furniture elements went smoothly, but Correctional Industries faced a new kind of challenge when the pieces were delivered. Although CI manufacturers were on schedule, the building contractors were about three months behind in completing the office building. CI had to find temporary storage for the newly-built furniture.

A warehouse was planned as part of CI's new facilities in order to accommodate just such an occasion. But there was a problem there too—the warehouse wasn't finished either. However, CI was able to work with contractors and take over a partly finished portion of the warehouse and protect the delivered pieces with tarps and coverings. As soon as possible, CI installation crews began installing the furniture, again coordinating with contractors as they finished up final phases of construction.

---

## Opportunities to Adapt

The high degree of flexibility and adaptability required by this project put Correctional Industries' creative talents to the test. Working hand-in-hand with project managers from DNR, CI planners and designers experimented with new combinations, concepts and ideas to develop solutions that pleased both agencies. CI proved it's ability to work closely with client agencies and meet challenging demands.





## Come and See for Yourself

Correctional Industries invites you to visit our showroom in Tumwater. Check out our design center and select from a variety of fabric and laminate samples. Pick up our newest catalogs and brochures, view samples of our products, or come in for a personalized chair demonstration. We look forward to seeing you. Please call ahead for showroom hours or to set up an appointment.

“Excellence and service with added value is our goal.”

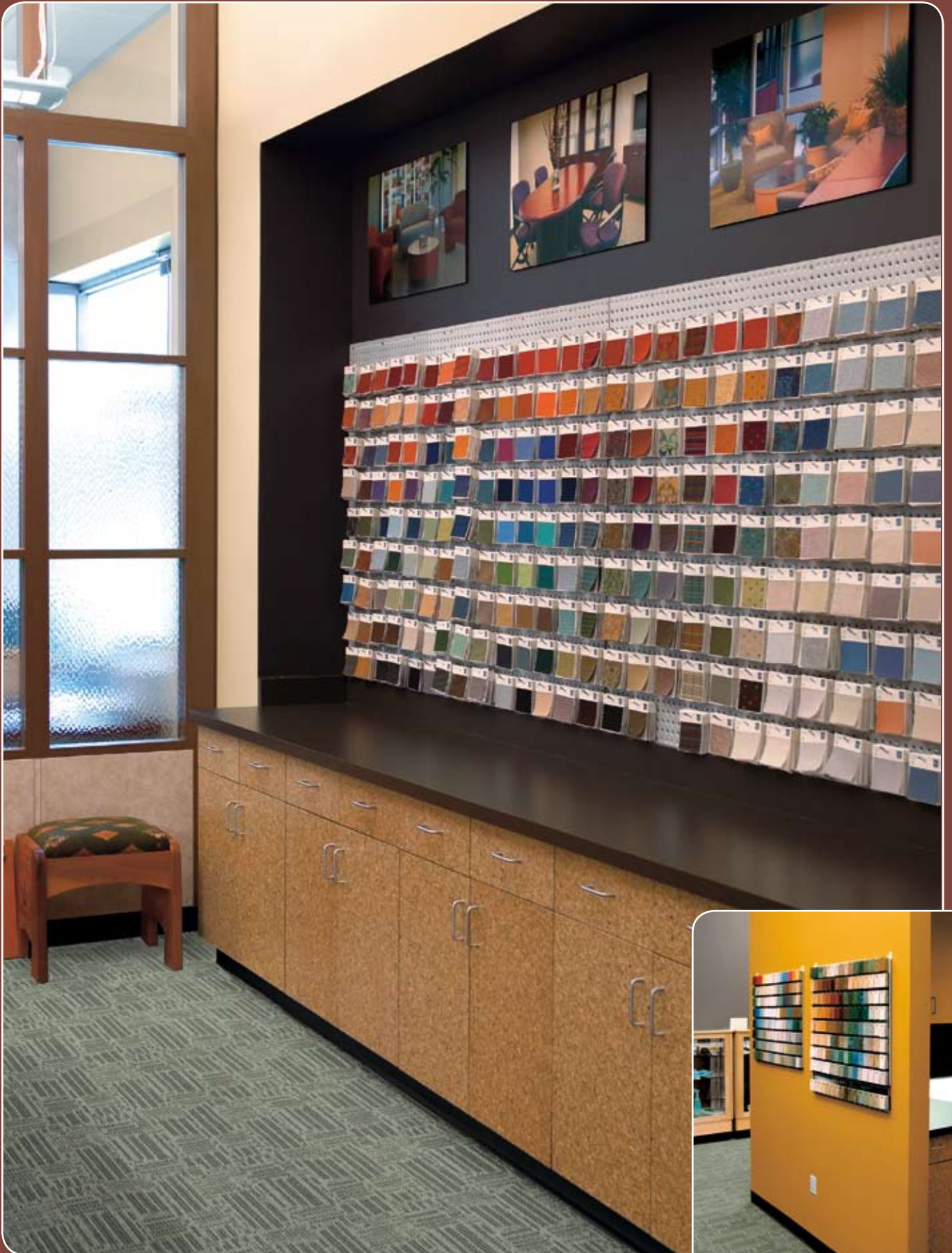
- Lyle Morse, CI Director

### DIRECTIONS FROM I-5

Take the Scott Lake Exit 99 and travel East on 93rd Ave SW. Continue through two all-way stops, and turn left onto Tilley Road S (Tilley becomes 88th Ave SE). Enter the Washington State Light Industrial Park on your right. Visitor parking is in the front.

WA State Light Industrial Park  
801 88th AVE SE  
Tumwater, WA 98501  
Phone: 1.360.725.9100







WASHINGTON STATE  
CORRECTIONAL INDUSTRIES

Department of Corrections  
PO Box 41115  
Olympia, WA 98504-1115



## CORRECTIONAL INDUSTRIES MISSION STATEMENT

As a business, Correctional Industries is committed to maintain and expand offender work training programs which develop marketable job skills, instill and promote positive work ethics, and reduce the tax burden of corrections.

Customer Service 1.800.628.4738 | [www.washingtonci.com](http://www.washingtonci.com)