



WASHINGTON STATE  
CORRECTIONAL INDUSTRIES



**JULY 2011 — REVISED 5/2012**

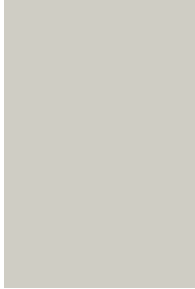
**DETENTION  
FURNITURE  
CATALOG**

## **MISSION STATEMENT**

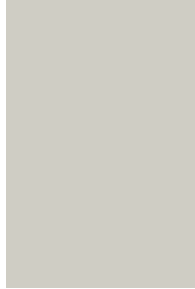
As a business, Correctional Industries is committed to maintain and expand offender work training programs which develop marketable job skills, instill and promote positive work ethics and reduce the tax burden of corrections.

## STANDARD COLOR CHOICES

All detention furnishings are available in the following colors



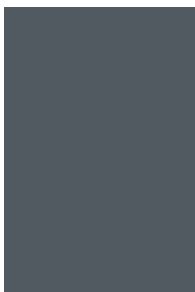
WHISPER



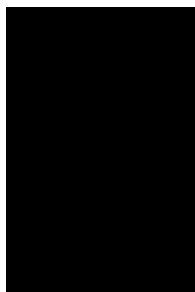
SAND



WARM GRAY



BLUE GRAY



BLACK

## 04 DETENTION FURNITURE

- 06 Bed Frames
- 08 Bed Accessories
- 10 Mattresses
- 11 Tables & Seating
- 16 Storage

## 17 OTHER PRODUCTS AND SERVICES

## 18 GENERAL INFORMATION

Ordering/Warranty>Returns

# Durable *furnishings*

Optional headboards  
come in pairs

Safety rails keep  
injuries to a minimum

Mounted  
bunk ladder

Bunks are stackable  
for maximum space

Powder coat or  
acrylic enamel finish

Tubular steel  
construction

Bed pan is folded and  
welded hot steel assembly

Drawers are available  
for standard size beds

Outfit your organization with Correctional Industries' wide selection of tables, desks, chairs, and beds. We can help you create a functional work environment in minimal space and help to increase your organization's efficiency. All of our institutional furniture products are maintenance free and made of a heavy gauge steel built to last for years.

*custom*  
**solutions**

Correctional Industries offers the ability to design new or modify existing products into something that is totally unique for your institution's needs. Our staff have a wealth of knowledge and can help you get started on the design and production of your new furniture installation. Call Customer Service or your Account Executive so we can help you find the best solution for your needs.





## Tube Frame Bed

- Acrylic enamel finish
- Mattress pocket is 76.25" x 30.25"
- Bed pan is single-piece, folded and welded 12-gauge hot-rolled steel assembly
- 1.5" x 2" tubular steel legs
- 1" x 1.5" inch tubular steel cross supports
- Bolt down brackets available on request
- Pre-punched for ladders and safety rails
- Requires coupler plates for stacking (not included)
- Bunk fasteners and coupler plates included (#6511SET)



(#6511SET) Bunk

Model #	Price	Size	Beds
6511	\$211.00	79.75"D x 31"W x 38"H	1
6511SET	\$420.00	79.75"D x 31"W x 76"H	2



## Sheet Frame Bed

- Choice of standard powder coat finish
- Mattress pocket is 76.25" x 30.25"
- Bed pan is single-piece, folded and welded 12-gauge hot-rolled steel assembly
- 3" formed legs, with integral bolt down plates
- Single, welded assembly
- May be punched for ladders and safety rails at no charge upon request
- Not stackable (#6513)
- Shipped knocked-down with bunk fasteners included (#6513SET)



(#6513SET) Bunk

Model #	Price	Size	Beds
6513	\$223.00	77"D x 31"W x 14"H	1
6513SET	\$327.00	77"D x 31"W x 53"H	2



## Angle Frame Bed

- Acrylic enamel finish
- Mattress pocket is 76.25" x 30.25"
- Bed pan is single-piece, folded and welded 12-gauge hot-rolled steel assembly
- Headboard constructed from 2" x 2" steel angle
- Integral bolt down brackets
- Bolt down brackets available at no charge upon request
- Pre-punched for ladders and safety rails
- Stackable; fasteners not included (#6517)
- Bunk fasteners included (#6517SET)



(#6517SET) Bunk

Model #	Price	Size	Beds
6517	\$233.00	77.13"D x 31.13"W x 38"H	1
6517SET	\$373.00	77.13"D x 31.13"W x 76"H	2

**Wall Mounted Bed**



- Choice of standard powder coat finish
- Single-piece bed pan is folded and welded
- 12-gauge hot-rolled steel assembly
- Gussets mounted beneath bed for clean appearance
- May be punched for ladders and safety rails at no charge upon request

Model #	Price	Size
6515	\$223.00	76"D x 30.5"W x 12"H

**Dormitory Bed**



- Choice of standard powder coat finish
- Polymer lined mattress pocket is 80"D x 36"W
- Two integrated drawers
- 12-gauge steel construction
- 14-gauge steel drawer assemblies

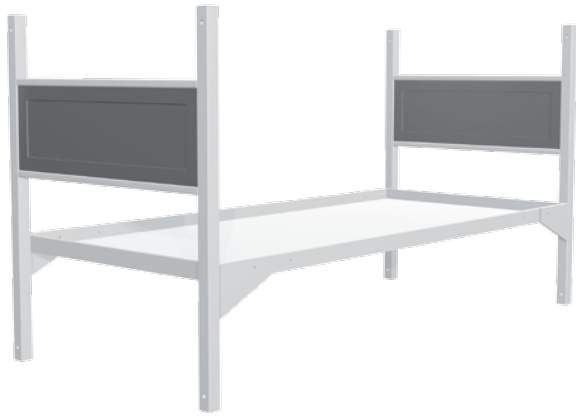
Model #	Price	Size	Weight
6514WSH	\$1,166.00	82"D x 38"W x 16"H	300 lbs.

**Bed Options Guide**

To better support your needs, we offer a variety of upgrades to our standard bed and bunk offerings. Using the table below, determine which options are available for your selected bed model (Choice of options are required for each order). Don't see what you're looking for? Let us help! For more information on custom designs please call your Account Executive.

(More option details on next page)

Model #	Coupler Plates	Headboard Inserts	Drawer (Under bed)	Shelf (Under bed)	Ladder (Bunk mount)	Ladder (Wall mount)	Safety Rail	Partition (Wood)	Partition (Steel)	Knocked Down	Fully Welded
	6511C	6511HB	6514D	6514S	6516	6519	6518R	6518	6518S	XXXXKD	XXXXFW
6511	\$12.00	\$71.00	\$105.00	\$82.00	\$64.00	\$64.00	\$52.00	\$163.00	\$117.00	X	X
6513			\$105.00	\$82.00	\$64.00	\$64.00	\$52.00			X	X
6515			\$105.00	\$82.00	\$64.00	\$64.00	\$52.00			X	X
6517			\$105.00	\$82.00	\$64.00	\$64.00	\$52.00	\$163.00	\$117.00	X	X
6514WSH											X

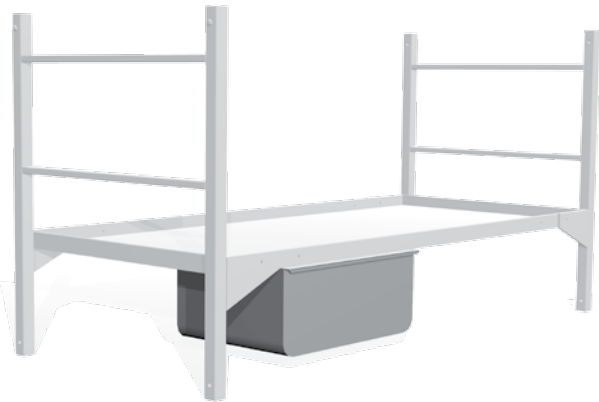


### Headboard Insert (pair)\*

- Choice of standard powder coat finish
- .625" laminated particleboard in golden oak finish
- 16-gauge steel frame
- Provided installed if purchased with a bed (requires drilling on beds already in use)
- See chart on page 33 for bed compatibility

\* Bed frame not included

Model #	Price	Size
6511HB	\$71.00	.75"D x 26.25"W x 11"H

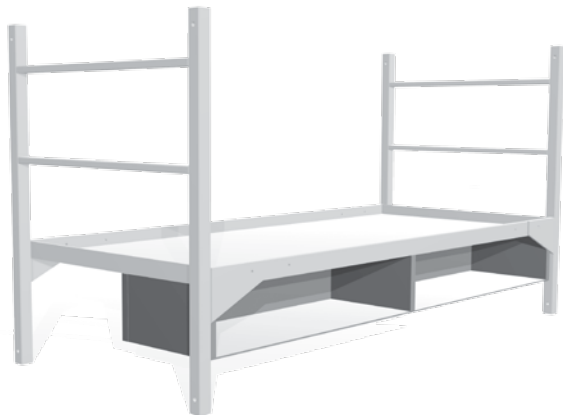


### Under Bed Drawer\*

- Choice of standard powder coat finish
- 14-gauge steel construction
- 2 drawers fits beneath standard beds
- Beds built with drawers stand 2" taller
- See chart on page 33 for bed compatibility

\* Bed frame not included

Model #	Price	Size
6514D	\$105.00	22"D x 19"W x 10"H



### Under Bed Shelving\*

- Powder coat or Enamel finish (determined by bed selection)
- 14-gauge steel sheet
- .25" steel angle
- Attached to bed at time of manufacture
- Beds built with shelving stand 2" taller
- See chart on page 33 for bed compatibility

\* Bed frame not included

Model #	Price	Size
6514S	\$82.00	70.5"D x 15.25"W x 7.25"H



**Bunk Ladder**

- Choice of standard powder coat finish
- 1" x 1.5" steel tubing
- 9.75" x 38" hole pattern
- Bunk mounted
- See chart on page 33 for bed compatibility

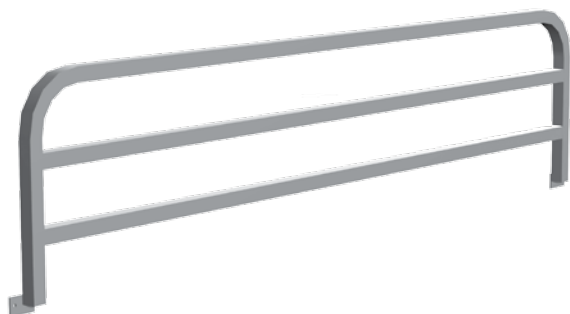
Model #	Price	Size
6516	\$64.00	14"W x 42"H



**Wall Ladder**

- Choice of standard powder coat finish
- 1" x 1.5" steel tubing
- 9.75" x 58" hole pattern
- Wall mounted
- See chart on page 33 for bed compatibility

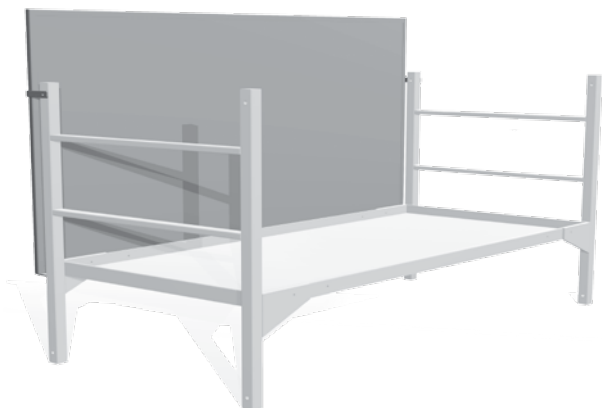
Model #	Price	Size
6519	\$64.00	14"W x 60"H



**Safety Rail**

- Choice of standard powder coat finish
- 62" hole spacing on mounting bracket
- Requires drilling on some models
- See chart on page 33 for bed compatibility

Model #	Price	Size
6518R	\$52.00	58.75"W x 14"H



**Partition\***

- Choice of standard powder coat finish
- Provides privacy between bunks set side by side
- .625 particle board w/ 16-gauge steel frame (#6518)
- 1" square steel tube stock w/ 14-gauge steel sheet (#6518S)
- See chart on page 33 for bed compatibility

\* Bed frame not included

Model #	Price	Size	Type
6518	\$163.00	.75"D x 79"W x 34"H	Wood
6518S	\$117.00	1"D x 79"W x 34"H	Steel

Mattresses meet all current municipal, state & federal standards, and are in compliance with RCW 70.76; does not contain Polybrominated Diphenyl Ethers.



## Sleep Safe Bonnell Innerspring Mattress

- Covered in 210 Denier Nylon fabric w/laminated cellulose-based fire barrier
- Top and bottom covered with 3/8" bonded polyester insulator padding
- Innerspring wrapped with 1" polyurethane foam top - IDL 38
- Antimicrobial, bacteria resistant, antifungal and flame resistant
- Three internal seams; w/covered heavy duty plastic zipper fourth seam
- Passes CFR part 1633 of the Code of Federal Regulations

Model #	Price	Size
DBWS3674	\$166.00	74"D x 36"W x 7"H
DBWS3678	\$170.00	78"D x 36"W x 7"H
DBWS3680	\$175.00	80"D x 36"W x 7"H
DBWS3874	\$170.00	74"D x 38"W x 7"H
DBWS3878	\$175.00	78"D x 38"W x 7"H
DBWS3880	\$180.00	80"D x 38"W x 7"H



## Sleep Safe Dual Foam Mattress

- Covered in 210 Denier Nylon fabric w/laminated cellulose-based fire barrier
- Dual comfort foam core - IDL 38 / IDL 22
- Antimicrobial, bacteria resistant, antifungal and flame resistant
- Three internal seams; w/covered heavy duty plastic zipper fourth seam
- Passes CFR part 1633 of the Code of Federal Regulations

Model #	Price	Size
DBB3674	\$164.00	74"D x 36"W x 6"H
DBB3676	\$166.00	76"D x 36"W x 6"H
DBB3678	\$168.00	78"D x 36"W x 6"H
DBB3680	\$170.00	80"D x 36"W x 6"H
DBB3874	\$168.00	74"D x 38"W x 6"H
DBB3878	\$173.00	78"D x 38"W x 6"H
DBB3880	\$175.00	80"D x 38"W x 6"H



## Neoprene Foam Core Mattress

- Flame retardant Neoprene foam core
- Covered with Correct-Tick® 10-1 antibacterial ticking
- Non-allergenic, bacteria resistant - antimicrobial and antifungal
- Internal sealed seams
- Fluid proof and stain resistant
- Passes CA Technical Bulletins #109, #121 and #129.

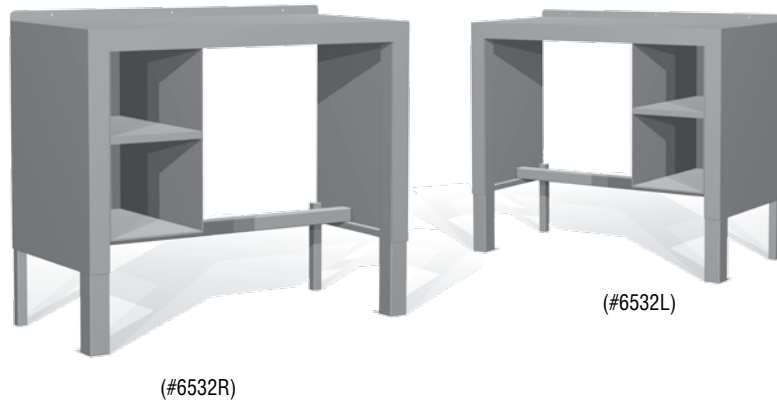
Model #	Price	Size
2180	\$86.00	76"D x 27"W x 2"H
2181	\$116.00	76"D x 27"W x 3"H
2182	\$89.00	74"D x 30"W x 2"H
2183	\$120.00	74"D x 30"W x 3"H
2184	\$215.00	74"D x 30"W x 6"H



## Bonded Logic Cotton Core Mattress

- Flame retardant felted cotton batting core
- Covered in Correct-Tick® 10-1 antibacterial ticking
- Non-allergenic, bacteria resistant - antimicrobial and antifungal
- Internal sealed seam
- Fluid proof and stain resistant
- Passes CA Technical Bulletins #109, #121 and #129.

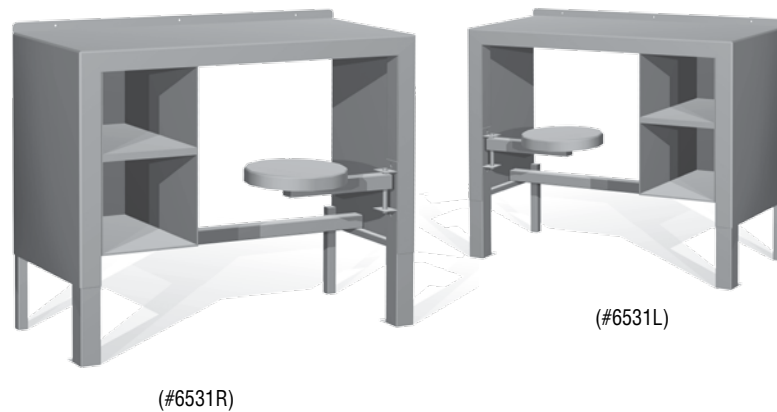
Model #	Price	Size
2131	\$53.00	76"D x 27"W x 4"H
2132	\$53.00	74"D x 30"W x 4"H
2133	\$53.00	72"D x 30"W x 4"H
2134	\$68.00	76"D x 36"W x 4"H
2135	\$74.00	68"D x 32"W x 6"H
2136	\$82.00	73"D x 32"W x 6"H
2137	\$89.00	80"D x 35"W x 6"H
2138	\$53.00	76"D x 30"W x 4"H



**Table Desk**

- Choice of standard powder coat finish
- Enclosed shelves
- (R)ight or (L)eft shelf orientation
- 12 and 14-gauge sheet steel
- Tubular steel legs and bracing
- Includes wall mount flange
- Two front legs incorporate bolt-down flanges

Model #	Price	Size
6532R	\$292.00	15.5'D x 36"W x 31.25"H
6532L	\$292.00	15.5'D x 36"W x 31.25"H



**Table Desk with Swing-arm Seat**

- Choice of standard powder coat finish
- Enclosed shelves
- (R)ight or (L)eft seat orientation
- 12 and 14-gauge sheet steel
- Tubular steel legs and bracing
- Includes wall mount flange
- Two front legs incorporate bolt-down flanges

Model #	Price	Size
6531R	\$321.00	15.5'D x 36"W x 31.25"H
6531L	\$321.00	15.5'D x 36"W x 31.25"H



**Two Person Table, Pedestal Base**

- Choice of standard powder coat finish
- 12-gauge welded steel construction
- Fully enclosed top and seats
- 12" diameter seats; seat height is 18"
- Seat arms are 3" square tubing
- 16" square x .25" plate mounting plate with holes
- Stainless steel top and seats available (call for quote)

Model #	Price	Size
6521	\$321.00	36"D x 18"W x 30"H



▲ A. Two person metal outdoor pedestal table



▲ B. Four person metal outdoor pedestal table



▲ C. Five person metal outdoor pedestal table



▲ D. Six person metal outdoor pedestal table

## Standard Features

- Fully enclosed welded 12 gauge steel construction
- 12" diameter seats; 18" height
- Seat arms are 3" square steel tubing
- Fully welded pedestal column
- 1/4" steel plate base
- Table requires mounting to appropriate surface (mounting hardware not included)
- Choice of standard powder coat finish

## Options

- Stainless steel tabletop & seats available for an upcharge
- Custom colors available for an upcharge
- Inbed mount available for an upcharge

### A. Outdoor Metal Pedestal Table - Two-Person

		Overall Dimensions			
Model #	Description	Width	Depth	Height	Price
6521	Square - 2 stools	36"	18"	30"	\$406

### B. Outdoor Metal Pedestal Table - Four-Person

		Overall Dimensions			
Model #	Description	Width	Depth	Height	Price
6523	Square - 4 stools	36"	36"	30"	\$644

### C. Outdoor Metal Pedestal Table - Five-Person

		Overall Dimensions		
Model #	Description	Diameter	Height	Price
6525	Round - 5 stools	78"	30"	\$892

### D. Outdoor Metal Pedestal Table - Six-Person

		Overall Dimensions		
Model #	Description	Diameter	Height	Price
6526	Round - 6 stools	78"	30"	\$919



▲ E. Four person outdoor spider base table



▲ F. Five person outdoor spider base table



▲ G. Six person outdoor spider base table

**Standard Features**

- Fully enclosed welded 12 gauge steel construction
- 12" diameter seats; 18" height
- Seat arms are 3" square steel tubing
- Seat posts are 2" square tubing
- Table requires mounting to appropriate surface (mounting hardware not included)
- Choice of standard powder coat finish

**Options**

- Cross bracing is also available
- Stainless steel tabletop & seats available for an upcharge
- Custom colors available for an upcharge

**E. Outdoor Metal Spider Base Table - Four-Person**

**Overall Dimensions**

Model #	Description	Width	Depth	Height	Price
6524	Square - 4 stools	36"	36"	30"	\$644

**F. Outdoor Metal Spider Base Table - Five-Person**

**Overall Dimensions**

Model #	Description	Depth	Height	Price
6528	Round - 5 stools	78"	30"	\$892

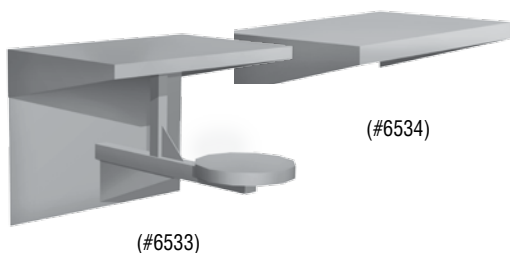
**G. Outdoor Metal Spider Base Table - Six-Person**

**Overall Dimensions**

Model #	Description	Depth	Height	Price
6527	Round - 6 stools	78"	30"	\$919

## Wall Mounted Table

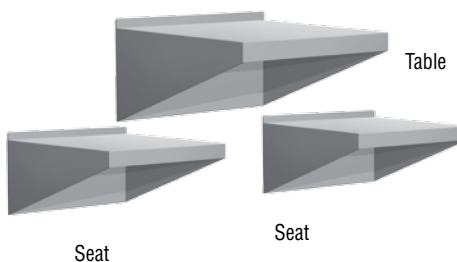
- Choice of standard powder coat finish
- 12-gauge steel construction
- Includes holes for wall mounting
- 12" round fixed seat



Model #	Price	Size
6533	\$204.00	20"D x 30"W x 22.25"H
6534	\$134.00	20"D x 32"W x 10"H

## Wall Mounted Table with Seats

- Choice of standard powder coat finish
- 12-gauge welded steel construction
- Wall anchor wall installation
- Fully gusseted



Model #	Price	Table Size	Seat Size
6522	\$106.00	18"D x 24"W x 10"H	18"D x 12"W x 10"H

## Floor Mounted Stool

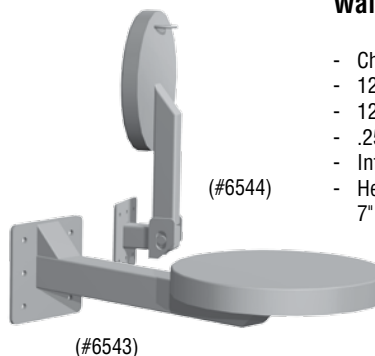
- Choice of standard powder coat finish
- 12" round seat
- 12-gauge welded steel construction
- .25" plate steel mounting flange
- Embedded mount available



Model #	Price	Size
6541	\$88.00	12"W x 18"H

## Wall Mounted Stool

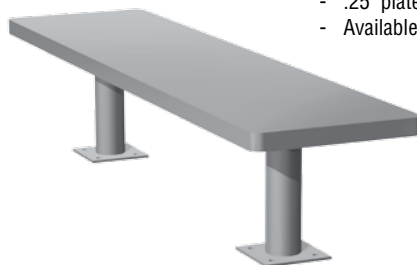
- Choice of standard powder coat finish
- 12"Dia seat w/square 2" steel tube arm
- 12-gauge welded steel construction
- .25" plate steel mounting flange
- Integral handle/cuff ring
- Heavy duty hinge folds up (#6544)  
7" projection from wall when folded



Model #	Price	Size	Type
6543	\$100.00	20"D x 12"W	Fixed
6544	\$123.00	24"D x 12"W	Collapsible

## Pedestal Base Bench

- Choice of standard powder coat finish
- 12-gauge welded steel construction
- .25" plate steel mounting flanges
- Available as embedded mount



Model #	Price	Size
6542	\$112.00	48"D x 12"W x 18"H

## Steel Mirror

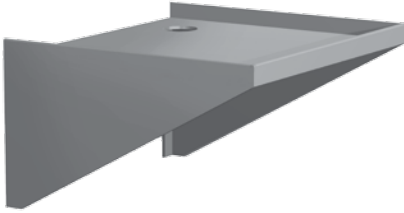
- Choice of standard powder coat finish
- Single piece of 18-gauge polished stainless steel
- Holes for wall mounting



Model #	Price	Size	Mirror Surface
6575	\$24.00	Sm (.25"D x 9.5"W x 11.25"H)	8"W x 9.75"H
6576	\$29.00	Lg (.25"D x 11.25"W x 11.25"H)	9.75"W x 15.75"H

**Wall Mounted TV Stand**

- Choice of standard powder coat finish
- 12-gauge steel welded construction
- Holes for wall mounting
- Holes for cable routing



Model #	Price	Size
6551	\$53.00	15"D x 16"W x 12"H

**Wall Mounted TV Stand**

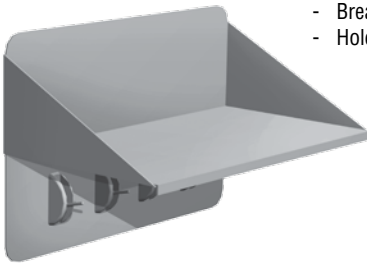
- Choice of standard powder coat finish
- 12-gauge steel welded construction
- Holes for wall mounting
- Holes for cable routing



Model #	Price	Size
6552	\$90.00	28"D x 32"W x 16"H
6553	\$129.00	30"D x 36"W x 18"H

**Wall Mounted Shelf w/Hooks**

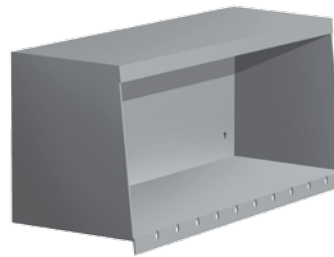
- Choice of standard powder coat finish
- 12-gauge steel welded construction
- Break-away hooks mount beneath shelf
- Holes for wall mounting



Model #	Price	Size
6562	\$100.00	10"D x 18"W x 12"H

**Wall Mounted Shelf**

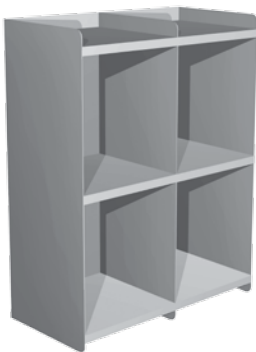
- Choice of standard powder coat finish
- 12-gauge steel welded construction
- 10 hanger slots
- Break-away hooks available as option
- Holes for wall mounting



Model #	Price	Size
6564	\$76.00	8"D x 30"W x 10"H

**Wall Mounted Shelving**

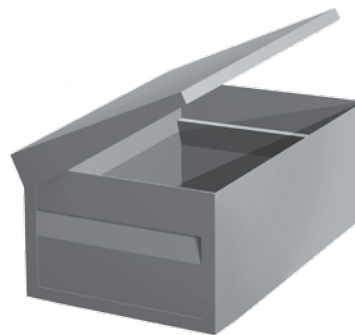
- Choice of standard powder coat finish
- Six shelves
- Bottom-mounted hanger bar
- Holes for wall mounting
- Break-away hooks available
- 12-gauge steel welded construction



Model #	Price	Size
6561	\$175.00	15.5"D x 30"W x 36"H

**Footlocker**

- Choice of standard powder coat finish
- 16-gauge spot welded construction
- Integral handles and padlock hasp
- Integral stops hold lid upright
- Fits under our standard sized beds



Model #	Price	Size
6571	\$94.00	16"D x 30"W x 11"H



A. Industrial Storage Locker with Hat Shelf



B. Industrial Wardrobe Locker with Hat Shelf



C. Industrial Wardrobe Locker with Laminated Top

**All Storage Lockers are TEMPORARILY UNAVAILABLE\***

## Standard Features

- Constructed of 16- and 22-gauge steel
- Ventilation louvers at top and bottom of each door
- Polished nickel-plated handles are securable via padlock
- Adjustable three-barrel hinges
- Choice of standard powder coat finish
- Tamper proof bolts attach latch, hinges and doors
- Shelves adjust in 1" increments
- Hat shelf located 10" from top (#6451, #6452)
- Hanger bar included with wardrobe lockers only
- Coat hooks available with or in place of hanger bar
- Integral 6" riser at base (#6451, #6452)
- Laminate top included on #6453, #6454, #6456, #6458 in Golden Oak (options available upon request)

### A. Industrial Storage Locker

Model #	Description	Overall Dimensions			Price
		Width	Depth	Height	
6451	8 Adjustable shelves w/hat shelf	36"	18"	78"	\$315

### B. Industrial Wardrobe Locker

Model #	Description	Overall Dimensions			Price
		Width	Depth	Height	
6452	4 Adjustable shelves w/hat shelf	36"	18"	78"	\$315

### C. Industrial Wardrobe Locker

Model #	Description	Overall Dimensions			Price
		Width	Depth	Height	
6453	3 Adjustable shelves w/laminated top	30"	18"	61"	\$303
6454	2 Adjustable shelves w/laminated top	36"	18"	37"	\$262
6456	2 Adjustable shelves w/laminated top	36"	18"	43"	\$303
6458	2 Adjustable shelves w/laminated top	36"	18"	49"	\$292

## Options

- Metal number tag installed or shipped w/loose rivets (\$2)
- Built-in 5 combination lock, resettable with master key (\$15); master key (\$2)
- Built-in key lock (\$10); master key (\$2)
- Coin control lock with coin return (\$90)
- Built-in extra shelf (\$8)
- Extra coat hook (\$3)
- Hanger bar (\$5)
- 36"W x 18"D laminated top (\$30)

*\* Temporarily Unavailable: Mandatory contract users, please contact your Account Executive for Letter of Exception in the meantime.*



A. Single Locker



B. Double Locker



C. Purse Locker

**All Lockers are  
TEMPORARILY UNAVAILABLE\***

**Standard Features**

- Constructed of 16- and 22-gauge steel
- Ventilation louvers at top and bottom of each door
- Choice of standard powder coat finish
- Polished nickel-plated handles are securable via padlock
- Adjustable three-barrel hinges
- Hat shelf located 10" from top included with single locker
- Two mounted coat hooks 4" below compartment top included with single and double lockers
- Hanger bar available with or in place of coat hooks

**Options**

- Sloped top (\$15)
- 6" enclosed base (\$20)
- Metal number tag installed or shipped with loose rivets (\$2)
- Built-in 5 combination lock, resettable with master key (\$15); master key (\$2)
- Built-in key lock (\$10); master key (\$2)
- Coin control lock with coin return (\$90)
- Built-in extra shelf (\$10)
- Additional coat hook (\$3)
- Hanger bar (\$5)

A. Single Locker		Overall Dimensions			
Model #	Description	Width	Depth	Height	Price
6311	1 Compartment	12"	15"	72"	\$141
6312	1 Compartment	15"	18"	72"	\$156
6313	1 Compartment	18"	21"	72"	\$170

B. Double Locker		Overall Dimensions			
Model #	Description	Width	Depth	Height	Price
6321	2 Compartments	12"	15"	72"	\$170
6322	2 Compartments	12"	18"	72"	\$187
6323	2 Compartments	15"	15"	72"	\$187

C. Purse Locker		Overall Dimensions			
Model #	Description	Width	Depth	Height	Price
6331	6 Compartments	12"	15"	72"	\$204
6332	6 Compartments	12"	18"	72"	\$223
6334	3 Compartments	12"	15"	37"	\$152
6335	6 Compartments	18"	18"	72"	\$274

*\* Temporarily Unavailable: Mandatory contract users, please contact your Account Executive for Letter of Exception in the meantime.*



A. Closed Shelving



B. Open Shelving/Starter



C. Open Shelving/Add-On

**All Closed and Open Shelving is  
TEMPORARILY UNAVAILABLE\***

## Standard Features

- Constructed of 14-gauge steel upright supports
- 18-gauge steel shelves
- Four adjustable shelves; adjust in 3" increments
- Starter units have two side panels
- Add-on units connect to starter units
- Choice of standard powder coat finish
- High pressure laminated end panels available
- Closed shelving is shipped fully assembled; open shelving is shipped knocked down
- Open shelving offers additional features to accommodate 3 archive boxes

## Options

- 12" Extra shelf (#XS12SH \$15)
- 18" Extra shelf (#XS18SH \$20)
- 24" Extra shelf (#XS24SH \$25)
- Set of 4 crossmembers (#6400CM \$40)
- Laminated end panels (call for quote)

A. Closed Shelving		Overall Dimensions			
Model #	Description	Width	Depth	Height	Price
6441		36"	12"	84"	\$216
6442		36"	18"	84"	\$232
6443		36"	24"D	84"	\$262

B. Open Shelving/Starter		Overall Dimensions			
Model #	Description	Width	Depth	Height	Price
6412		36"	12"	72"	\$161
6422		36"	18"	72"	\$192
6432		36"	24"	72"	\$211
6416		36"	12"	84"	\$178
6426		36"	18"	84"	\$199
6436		36"	24"	84"	\$223
6424 (archive)		42"	18"	72"	\$223
6428 (archive)		42"	18"	84"	\$252

C. Open Shelving/Add-on		Overall Dimensions			
Model #	Description	Width	Depth	Height	Price
6411		35"	12"	72"	\$127
6421		35"	18"	72"	\$158
6431		35"	24"	72"	\$182
6415		35"	12"	84"	\$146
6425		35"	18"	84"	\$163
6435		35"	24"	84"	\$185
6423 (archive)		41"	18"	72"	\$192
6427 (archive)		41"	18"	84"	\$223

\* Temporarily Unavailable: Mandatory contract users, please contact your Account Executive for Letter of Exception in the meantime.

*Food*  
**products**



Correctional Industries uses advanced food processing to produce an extensive range of high quality prepared food products available in bulk or individually sized portions. We offer main course entrées, baked goods, soups, and frozen meals — all made to meet your special dietary requirements.

*CorrectPac®*  
**janitorial**

The CorrectPac® system uses concentrated detergents in pac sizes that match water levels of traditional buckets, tanks, and spray bottles. Each pac of liquid concentrate is added to water to make an accurately diluted detergent resulting in a safer use of chemicals. Simply fill containers to the proper level with water, open one pac and pour. Versatile formulations have multiple applications reducing labor and inventory.



*Office*  
**furniture**



Fitting your staff into a limited space can be a challenging task. CI Account Executives can provide assistance with product specifications, space planning, and project management to help furnish your entire office in one stop: from panel systems to freestanding systems; folding tables to conference tables; secretarial to executive desks; and stacking chairs to ergonomic chairs that fit every size and shape. Visit our web site to locate your Account Executive for personal assistance in determining your space planning needs.

## No Bids Required

Correctional Industries (CI) offers eligible customers quick and easy access to quality products and services through various authorities provided under the Revised Code of Washington (RCW 43.19.534, RCW 72.60.160, RCW 43.19.1906).

## State Furniture Contract #14393

Products available: Office Systems Furniture, Desk Systems, Tables, K-12 Classroom Furnishings, Office Accessories, Remanufactured Office Systems, Ergonomic Seating, Task Intensive Seating, Institutional, Lounge Furniture, Storage and High Density Filing, Network Support (LAN) Furniture, Restoration/Re-upholstery Services, Computer Aided Design & Layout Services, Warehousing Services. For current contract and history information, log on to [www.ga.wa.gov/pca/pcacont.htm](http://www.ga.wa.gov/pca/pcacont.htm).

## State CI Umbrella Contract #10103

Products available: Sandbags, Validation Tabs, Sign Recycling, Sign Refurbishing, Sewing/Apparel, Shoes, Flat Goods, Mattresses and Covers, Engraving, Printing, Emergency Products, Signage (Wood and Aluminum), CAD Services, Temporary Housing, Storage Sheds, Embroidery, Screen Printing, Laundry Services, Agricultural Products and Services, Meat Cutting, Binders, Food Products, Environmental Services, Garments, Laundry, Dishwashing, Floor Care, Cleaning Chemicals, Bed Linens, Towels. For current contract and history information, log on to [www.ga.wa.gov/pca/pcacont.htm](http://www.ga.wa.gov/pca/pcacont.htm).

## Eligible Contract Users

- Washington State agencies and political subdivisions of Washington and Oregon States
- Institutions of Higher Education (Universities, community and technical colleges)
- Federal Agencies
- Private contractors, when supplying government agencies
- Certified not-for-profit organizations
- Tribal/Indian Nation

## Terms of Sale

For items found on contract #14393, listed pricing includes delivery within the state of Washington. Payment is due within thirty (30) days of receipt of invoice. Applicable prices are those in effect at the time of receipt of your order. All prices and specifications are subject to change without notice. For current pricing, visit [www.washingtonci.com](http://www.washingtonci.com).

## Quantity Discounts

CI offers an additional discount for volume purchasing as identified in contract 14393. CI reserves the right to give additional discounts at their discretion. The following items are excluded when determining quantity discounts: Sales Tax, Inside Delivery, Installation, Norix Products, High Density Filing and Storage Systems, Remanufactured Systems Furniture, Used "as-is" Office Furniture, Detention Furnishings, Custom Orders.

## Warranty

Washington State Department of Corrections, Correctional Industries, warrants its products to be free of defects in material and workmanship from the date of the delivery. The warranty provides for repair and/or replacement free of charge to the customer at CI's discretion (which includes labor, materials, freight, and travel costs associated with the repair and/or replacement). The complete warranty for each item can be obtained by contacting Customer Service at 1.800.628.4738 or by visiting our website at [www.washingtonci.com](http://www.washingtonci.com).

## Required For Ordering

### Customer Information:

- Purchase order number
- Agency/organization name and mailing address
- Name and telephone number of contact at receiving location
- Shipping address
- Billing address, contact person, telephone and fax numbers
- Federal tax code
- Signature and title of the person authorized to issue the order

### Product Information:

- Model number, Name/Description
- Color/Finish Choices
- Options and variations if applicable
- Quantity
- Price

## Mail Orders:

CI Customer Service  
Washington Corrections Center  
PO Box 900, G Building  
West 2321 Dayton Airport Road  
Shelton, WA 98584

## Please Send Payment to:

Correctional Industries  
Accounts Receivable  
PO Box 41116  
Olympia, WA 98504-1116

## Purchase Order Acknowledgments

CI will acknowledge orders in writing within ten (10) working days after receipt of an accurate and complete order. Order is not considered received until all information provided by the customer for the product, billing, and shipping data is complete and accurate. Orders are accepted by CI per terms on the acknowledgment.

If a confirming order is sent to CI, the order must be marked 'Confirming Order'. Original order sent via FAX. CI will not be responsible for any duplication of orders caused by unmarked hard copy, confirming orders or orders sent via FAX more than once.

## Order Cancellation & Change Orders

The customer may cancel or change orders for standard contract items without penalty within five (5) working days from purchase order receipt. After this period, CI may impose a thirty-five percent (35%) penalty of the item(s) being canceled and/or changed. If a customer cancels an order for modified or custom items, CI may impose up to a one-hundred percent (100%) penalty of the item(s) being canceled.

## Returns

Any standard item(s) may be returned within five (5) working days after receipt provided:

- The item is new, and
- The item is in unused condition
- The item must be in the original packaging, provided CI has not disposed of it.
- The item is not modified or custom built for the customer.

A restocking charge equal to fifty percent (50%) of the net purchase price (before taxes) will be paid by the customer when the above conditions are met. The customer will be responsible for return freight cost. However, if error was caused by CI, there will be no restocking charge.

**Headquarters**

Correctional Industries  
801 88th Avenue SE  
Tumwater, Washington 98501

Department of Corrections/Correctional Industries  
PO Box 41115  
Olympia, Washington 98504-1115  
Phone: 1.800.628.4738  
FAX: 1.888.535.0627

**Showroom**

Please call your CI Account Executive (AE) or CI reception at 1.360.725.9100 for directions, showroom hours and to set up an appointment.

Olympia/Tumwater: Headquarters Showroom  
801 88th Avenue SE  
Tumwater, Washington 98501

**Delivery**

Schedule is determined after receipt of accurate and complete order.

Fast Fulfillment Program: 7 calendar days

Standard Orders: 60 calendar days

Custom Orders: 90 calendar days

Orders over \$100,000: 90 calendar days

Orders over \$250,000: negotiated

**Inside Delivery**

CI provides inside delivery as requested on an as-needed basis by the contract users. Inside delivery will be defined as the delivery of the item(s) to exact location requested including removal and disposal of packaging, and assembly if necessary. However, assembly may not take place at the time of delivery in the event of numerous items to assemble. Any orders requiring this service shall be clearly documented to so indicate. For inside delivery an additional charge of four percent (4%) will be charged.

**Installation**

As an optional service to the customer, CI will provide delivery and installation of products as identified and requested in writing on original or change order. Installation charge percentages will be calculated from the product cost, after discount and before taxes. For current installation rates, please check the contract at: [http://www.washingtonci.com/\\_content/general\\_info/state\\_contracts.aspx](http://www.washingtonci.com/_content/general_info/state_contracts.aspx). Customer is responsible for hiring and scheduling a licensed electrician to make electrical connections and to perform electrical work.

The customer reserves the right to install items with its own personnel or other third party(ies). The customer shall first receive prior approval from CI before using an outside third party for installation. CI shall provide detailed installation instructions. Improper installation by others shall void manufacturer's warranty.

**Design and Space Planning Assistance**

As an option to the contract users, CI will provide professional design, layout and space planning services. CI can re-configure existing spaces, provide an accurate visual layout of intended surroundings so that customers can see where new offices will be located, what each room will look like and what new or additional furniture will be required – all before the customer makes their final decision and initial investment. This avoids costly mistakes and allows for adjustments, changes and modifications before any purchase orders are generated.

**Re-configuration, Assembly and Disassembly**

As an option to the contract users, CI provides internal office moves (includes disassembling, move within the same building, and reassemble) and/or re-configuration of CI's systems furniture. Cost to be determined for each project. Assembly and disassembly will not include electrical power connections which require a licensed electrician to perform the work. The customer may hire a separate contractor to do the electrical connections consistent with prevailing wage laws. Improper electrical connection and disconnections will void the manufacturer's warranty.

**Re-delivery of Freight**

When re-delivery of merchandise is required because the customer is not ready to accept merchandise, and no notification of this fact is given to CI at least two weeks prior to the scheduled ship date, the actual costs of freight, restocking and re-handling, will be billed to the customer. For re-delivery charges, please call your Account Executive or Customer Service at 1.800.628.4738.

**Shipment Damage Claims**

The consignee before acceptance should carefully inspect all shipments, and the delivery carrier should be requested to record any damage or shortage. Any time damaged or defective merchandise is discovered it should be brought to the immediate attention of a customer service representative at 1.800.628.4738. Concealed damage or shortages are to be reported within five (5) working days of receipt of merchandise. Damaged freight must be kept at the point of delivery in the original packing for inspection by CI. After obtaining a clear receipt for shipment, CI is no longer responsible for damage or shortages.

**Shipment Shortage Claims**

Shortage claims reported after ten (10) days beyond shipment date will not be honored.



WASHINGTON STATE  
CORRECTIONAL INDUSTRIES

Department of Corrections  
PO Box 41115  
801 88th Avenue SE  
Tumwater, Washington 98501  
Phone: 360.725.9100

